



FPS1000

FPS2000



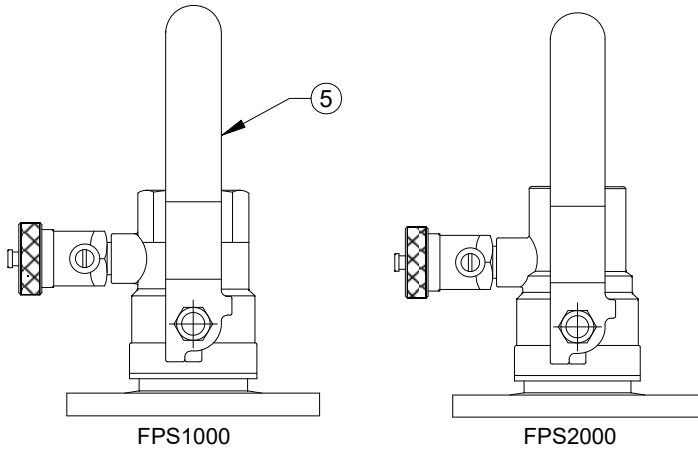
**THE BOSTON VALVE Co.**

A DIVISION OF BOSTON METAL PRODUCTS, LTD.  
25 THURBER BLVD., UNIT #3  
SMITHFIELD, RI 02917

TOLL FREE: 1-800-839-0013, TEL: 401-231-8537  
FAX: 401-231-8491  
WWW.BOSTONVALVE.COM

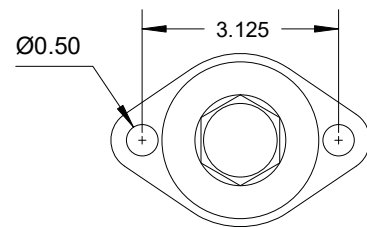
# FPS1000-FPS2000 SERIES FLANGED CIRCULATOR PURGE VALVE

A flanged by NPT or copper, circulator isolation valve with 3/4" hose connection and purge stop valve.



## DIMENSIONS

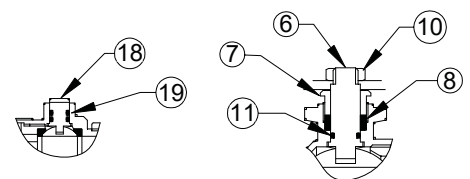
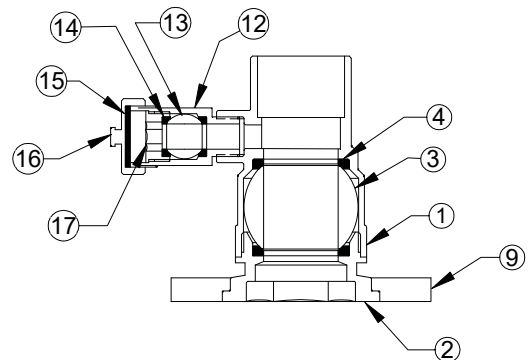
CAT. NO.	SIZE	L	D	H	W
FPS0751000	3/4	3.00	.75	2.10	3.62
FPS1001000	1	3.50	1.00	2.46	4.33
FPS1251000	1 1/4	3.75	1.20	3.05	5.11
FPS0752000	3/4	3.00	.75	2.10	3.62
FPS1002000	1	3.50	1.00	2.46	4.33
FPS1252000	1 1/4	4.00	1.20	3.05	5.11



FLANGE BOLT PATTERN

## MATERIALS

NO	PART NAME	MATERIAL
19	O-RING	BUNA-N
18	DRAIN VALVE STEM	BRASS, C36000
17	BALL RETAINER	BRASS, C36000
16	DRAIN VALVE CAP	BRASS, C37700
15	GASKET	BUNA-N
14	DRAIN VALVE SEAT	PTFE
13	DRAIN VALVE BALL	BRASS, CHROME PLTD.
12	DRAIN VALVE BODY	BRASS, C37700
11	O-RING	BUNA-N
10	NUT	STEEL, ZINC PLATED
9	FLANGE	BRASS
8	STEM PACKING	PTFE
7	GLAND NUT	BRASS, C36000
6	STEM	BRASS, C36000
5	HANDLE	STEEL, ZINC PLATED, PLASTICOATED
4	SEAT	PTFE
3	BALL	BRASS, CHROME PLTD.
2	END CAP	BRASS, C37700
1	BODY	BRASS, C37700



STEM DETAIL