



# BALL VALVE HANDLE OPTIONS



**THE BOSTON VALVE Co.**

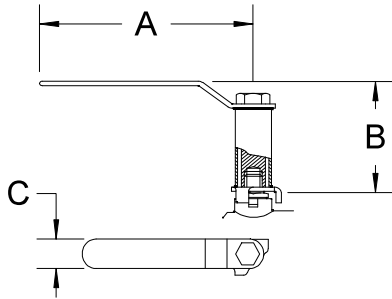
**A DIVISION OF BOSTON METAL PRODUCTS, LTD.  
25 THURBER BLVD., UNIT #3  
SMITHFIELD, RI 02917**

**TOLL FREE: 1-800-839-0013, TEL: 401-231-8537  
FAX: 401-231-8491**

**WWW.BOSTONVALVE.COM**

# ***BALL VALVE HANDLE OPTIONS***

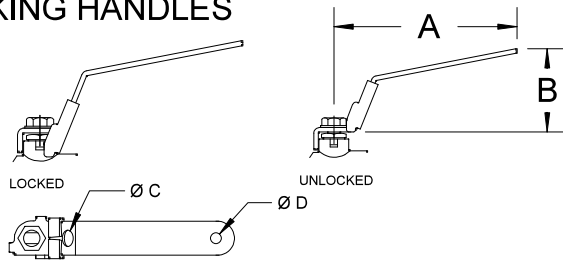
## EXTENDED HEIGHT HANDLES



### DIMENSIONS

P/N	SIZE	A	B	C
XH1	1/4 - 3/8 - 1/2	3 1/2	2 7/8	3/4
XH2	3/4 - 1	4 1/2	2 7/8	7/8
XH3	1 1/4 - 1 1/2 - 2	5 1/2	2 7/8	1

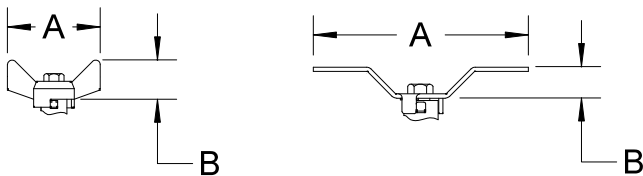
## LOCKING HANDLES



### DIMENSIONS

P/N	SIZE	A	B	C	D
LH1	1/4, 3/8, 1/2	4 1/4	1 3/4	3/16	9/64
LH2	3/4, 1	4 3/4	2	5/16	1/4
LH3	1 1/4 - 1 1/2 - 2	5 1/2	1 1/2	5/16	1/4

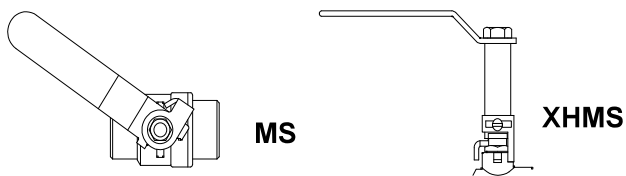
## TEE HANDLES



### DIMENSIONS

P/N	SIZE	A	B
CT1	1/4 - 3/8 - 1/2	2	1 1/16
CT2	3/4 - 1	2 1/2	1
FM150	1 1/4 - 1 1/2 - 2	6	1 1/4
TH4	2 1/2 - 3 - 4	8 7/8	1 3/4

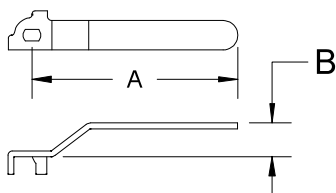
## MEMORY STOPS



### DIMENSIONS

P/N	SIZE	A	B
MS1	1/4 - 3/8 - 1/2		
MS2	3/4 - 1		
MS3	1 1/4 - 1 1/2 - 2		
XHMS1	1/4 - 3/8 - 1/2	3 1/2	2 7/8
XHMS2	3/4 - 1	4 1/2	2 7/8
XHMS3	1 1/4 - 1 1/2 - 2	5 1/2	2 7/8

## STAINLESS STEEL HANDLES



### DIMENSIONS

P/N	SIZE	A	B
SSH1	1/4 - 3/8 - 1/2	3 5/8	3/4
SSH2	3/4 - 1	4 5/8	3/4
SSH3	1 1/4 - 1 1/2 - 2	5 5/8	1